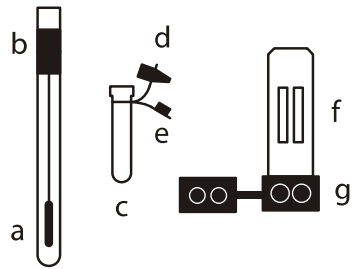
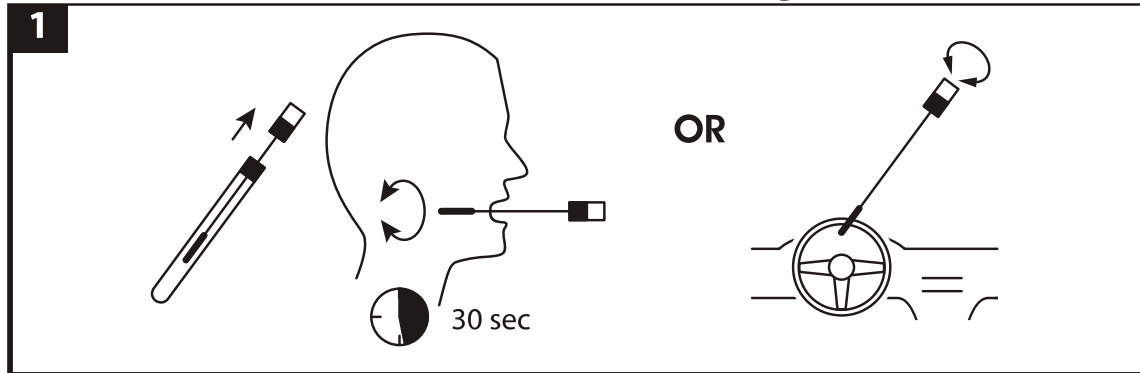


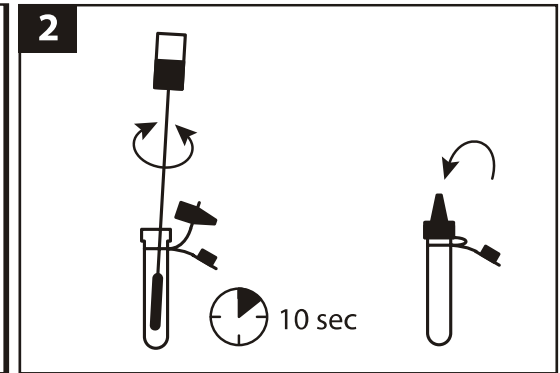
# Rapid STAT Quick reference guide 6-RSM-0083



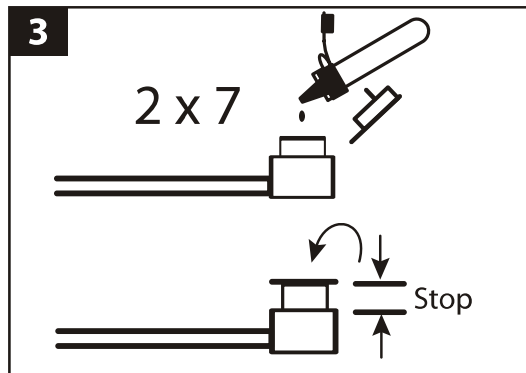
- a collector
- b aroma field
- c buffer bottle
- d dropper lid
- e closing cap
- f test field
- g incubation device



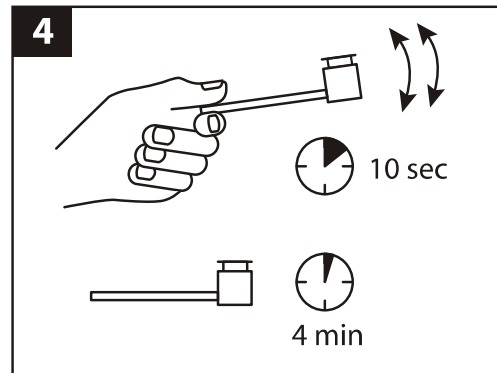
**1. For saliva tests:** instruct the donor to use the collection stick (a) like a tooth brush for approx. 30 seconds in both cheek pouches. **For wipe tests:** take the dry collection stick and wipe over the surface (approx. 10 sec.). **For pure substance tests:** Do not dip the collection stick completely into the substance, just wipe on the surface of the surrounding of the substance (f.e. Interior edge of the packing or bottle).



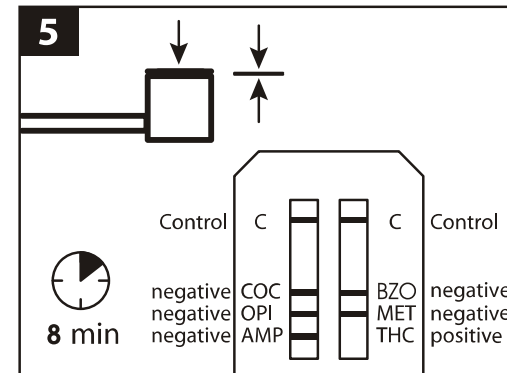
**2. Wash out sample**  
Twist the collector with rotary movements in the buffer bottle (c) for 10 seconds stop-go. Put the dropper lid (d) onto the buffer bottle (c).



**3. Put sample to test**  
Put 7 drops out of the buffer bottle (c) in each opening of the incubation device (g) and close the lid to the first stop.



**4. Incubation phase**  
Shake the test for 10 seconds and wait 4 minutes.



**5. Start and read test**  
To press down the lid lay down the test horizontally. Press down the lid completely. Now the evaluation time of 8 minutes starts.

**6**  
**Read result from the 8. minute on !**  
  
Visible lines are negative results  
  
NOT visible lines are positive results  
  
Results are stable and evaluable for 20 minutes