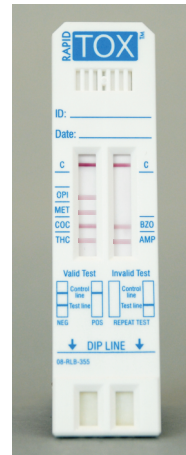




# Rapid TOX™

**Rapid TOX™**: a **cost effective** test for the detection of **2 to 10** drugs in urine. Select from 15 different drug parameters, dip or pipette method or low volume procedure.



## AMP

amphetamines 1000 ng/ml

## BAR

barbiturates 300 ng/ml

## BUP

buprenorphine 12,5 ng/ml

## BZO

benzodiazepines 300 ng/ml

## COC

cocaine 300 ng/ml

## KET **NEW**

ketamine 500 ng/ml

## MDMA

ecstasy 1000 ng/ml

## MTD

methadone 300 ng/ml

## MET

methamphetamines 1000 ng/ml

## OPI

opiates 300 or 2000 ng/ml

## OXY

oxycodone 100 ng/ml

## PCP

phencyclidine 25 ng/ml

## PPX

propoxyphene 300 ng/ml

## THC

marijuana 50 ng/ml

## TCA

tricyclic antidepressants 1000 ng/ml

## FLEXIBILITY

- 2 to 10 drugs per panel
- 15 different drugs available
- Customized configurations available
- Multiple cut-off options
- Specimen collection cup available

## CONVENIENCE

- Temperature strip on collection cup
- Clear collection cup - allows for visual integrity check
- Closed specimen cup-insert device through slot
- Flexible sampling: dip or pipette
- Pipette included
- Alternate low volume procedure:
  - pipette 3 drops or
  - works with very low volume due to the two holes at the bottom of the cassette
- Results ready in 3-5 minutes
- No timing required: control line indicator
- Hygienic urine cap

## PERFORMANCE

- Rapid TOX™ has built-in procedural controls
- Results stable for four hours
- >99% correlation to GC/MS at 95% confidence level
- Colloidal gold technology
  - = superior sensitivity, accuracy & precision
- Tested for cross-reactivity against over 500 drugs
- SAMHSA and alternate lower cut-off

## TRAINING/SUPPORT

- Onsite training with Train the Trainer's focus
- Technical support



## Rapid TOX™ Procedure

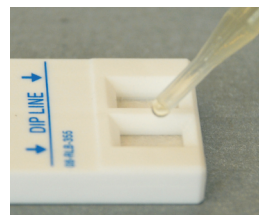
### Collect the sample



#### Dip method Rapid TOX™

Dip the cassette for approx. 3 seconds in the urine until the urine level is within the marking.

Lay test flat.



#### Pipette method Rapid TOX™

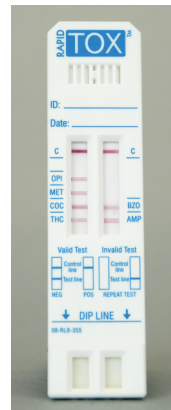
Put 3 - 4 drops of urine gradually in each of the holes.



#### Minimum quantity Procedure Rapid TOX™

Put the bottom of the cassette directly on a drop of urine.

The urine will be absorbed by the test strip. Then lay test flat.



Lines will appear within shortest time.

Results can be evaluated and are stable for 4 hours.

Interpretation of test results: turn page.

#### Interpretation of test results

The results can be read as soon as the control line has formed and the background cleared (normally after 3-5 minutes). The intensity of the lines may vary.

#### Test valid

-



control  
drug 5  
drug 4  
drug 3  
drug 2  
drug 1

+



#### Test invalid no control line



control  
drug 5  
drug 4  
drug 3  
drug 2  
drug 1

